

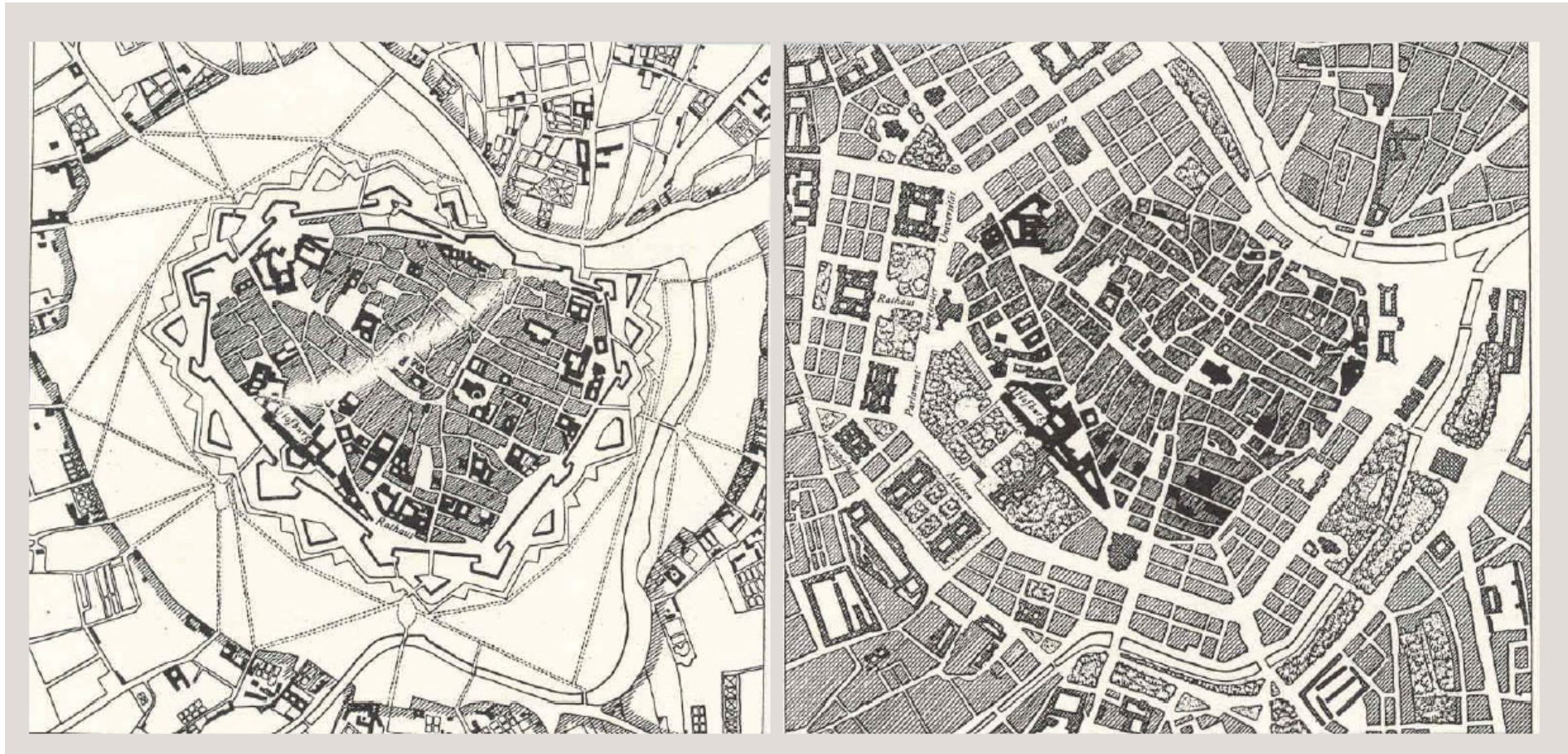
RINGSTRASSE, VIENNA 2015

RINGSTRASSE - A WORLD CLASS STREET



Gehl
Architects

PAST AND PRESENT ...



KEY PROBLEM_RINGSTRASSE AS A TRAFFIC BARRIER



Space allocation

Regardless of the actual traffic need for Ringstrasse, the roadscape is locked in by the light rail and the tree lines.

EXPERIENCE



Dominating traffic scenery

Vehicular traffic generally travels at high speeds, traffic has priority through lights, the associated parking demand is substantial.

EXPERIENCE



Linear lines

The design of Ringstrasse stresses the linear movement and emphasizes Ringstrasse as a transport corridor.

EXPERIENCE



Paving material

The footways are tarmac which equals the roadspace, signals low pedestrian priority and clearly demonstrates to visitors that Ringstrasse is not part of the inner city, which enjoys high quality paving materials.

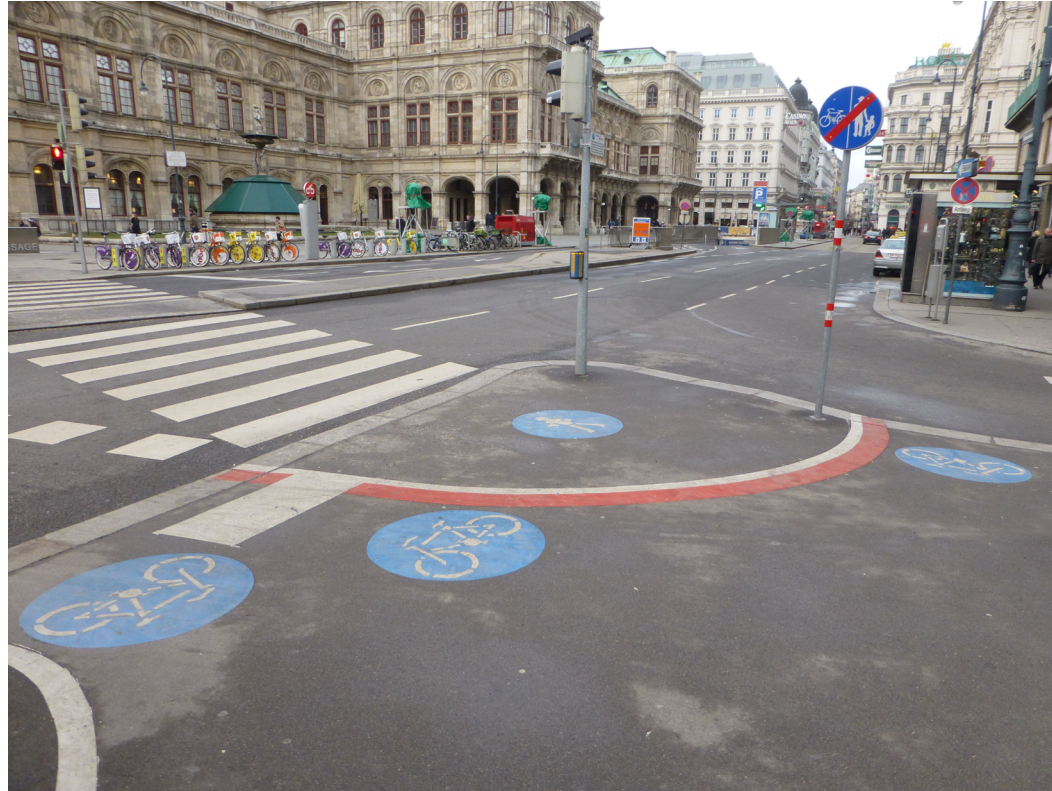
EXPERIENCE



Low pedestrian priority

Endless crossing distances & long waits at traffic lights reflect a street that is divided into two sides.

EXPERIENCE



Confusing layouts

Pedestrians and bicyclists are constantly shifting positions / sharing paths and crossing paths. The inconsistency in the layout doesn't encourage people to walk or bicycle.

EXPERIENCE



Unappealing entries to the core of the city

Side streets to Ringstrasse are used as storage for parking facilities, signage and other space consuming elements - pavillons, tram stops etc.

EXPERIENCE



Weak interface between Ringstrasse and key monuments

The immediate surroundings to key monuments fail to reflect the quality of the buildings, but instead miserably underperform.

EXPERIENCE



High quality architecture

The majority of the cultural buildings along Ringstrasse have extra-ordinary detailing and qualities.



Low quality public realm

Materials of low quality and a deteriorating vehicular sense of respectful distance to the monuments.

EXPERIENCE



Poor quality environment for outdoor cafés

Very little space for outdoor serving and in close vicinity to parking and traffic.

EXPERIENCE

Cluttered tram stops

The tram stops have gradually become parking areas for various elements and various types and designs of pavillons and waiting facilities.



CELEBRATING RINGSTRASSE 150 YEARS



Austrian Airlines inflight magazine

April 2015

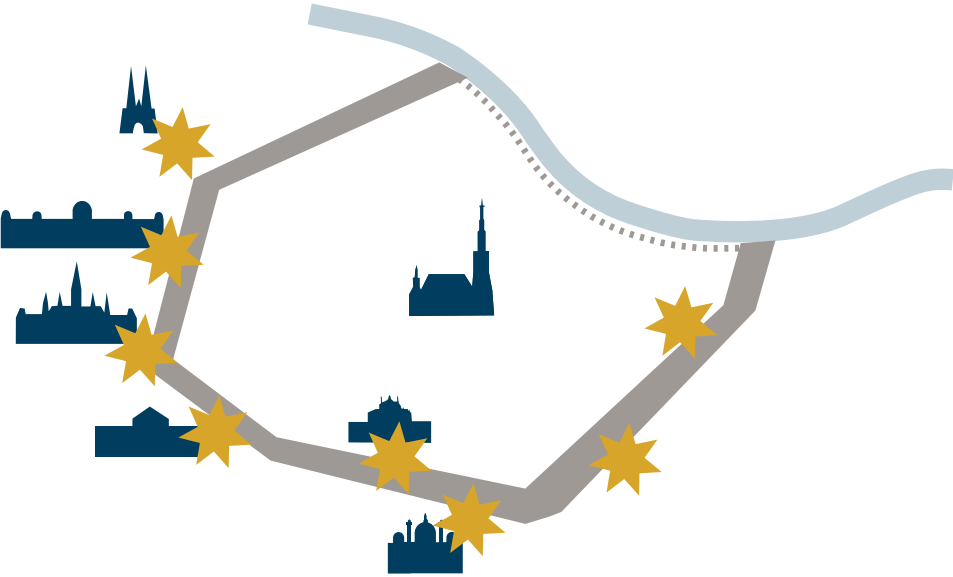
EXPERIENCE



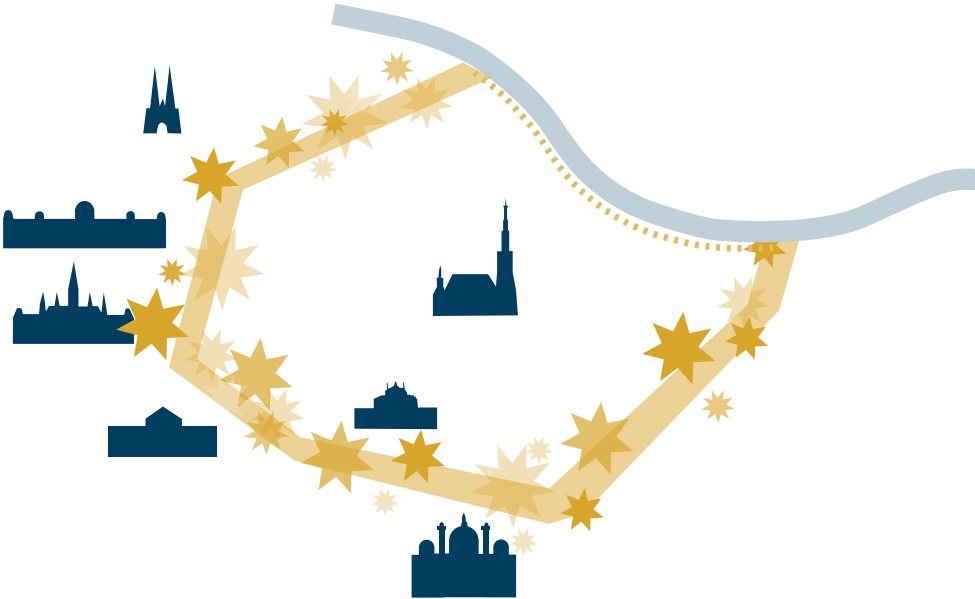
The Ringstrasse edges are excessive spaces with little use

Parking and access to parking fixates vast areas for quite infrequent use and limits space for bicycling and for pedestrians.

CONCEPTS



from world class buildings ...



... to a world class street !!

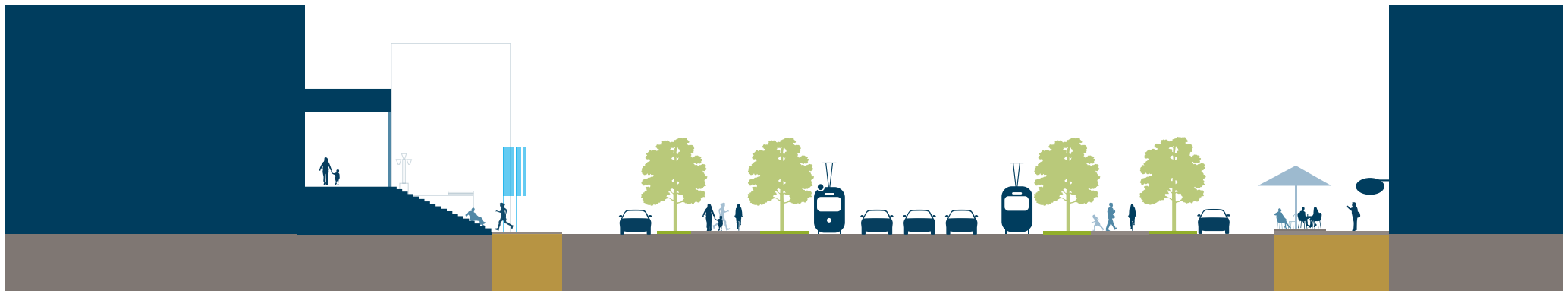
2/3 OF RINGSTRASSE IS OUTSIDE THE TRAFFIC CORRIDOR



RINGSTRASSE, VIENNA 2015

EXPANDED PEDESTRIAN AREA

UNIVERSITY

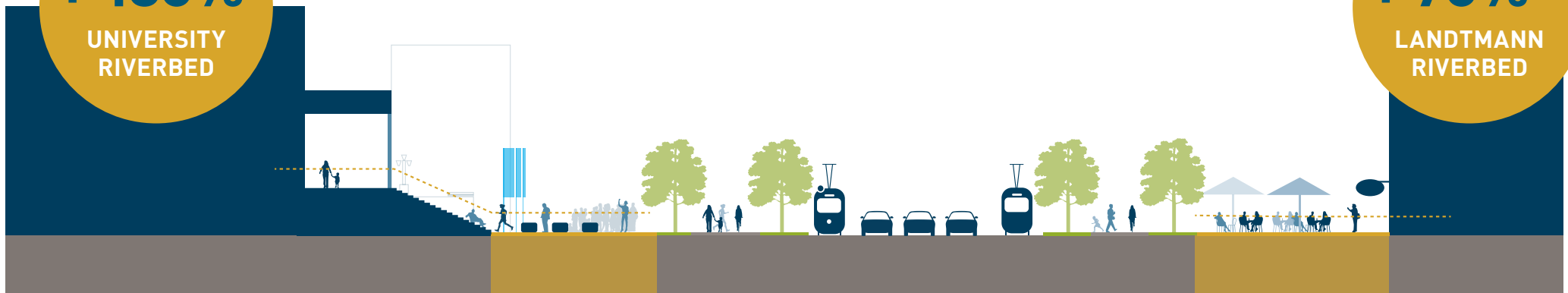


4,3 m

7,0 m

+ 130%

UNIVERSITY
RIVERBED



10 m

11,8 m

+ 70%

LANDTMANN
RIVERBED

RINGSTRASSE, VIENNA 2015

A LEGIBLE RINGSTRASSE

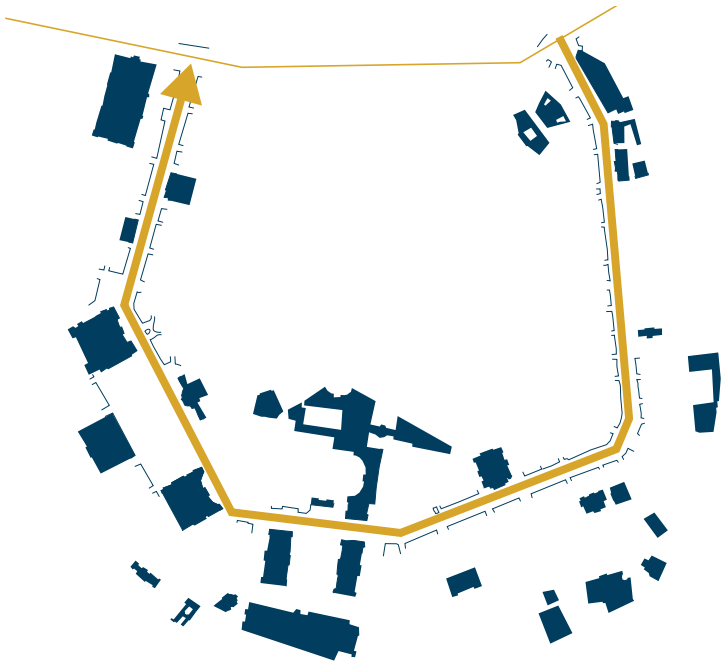


RINGSTRASSE, VIENNA 2015

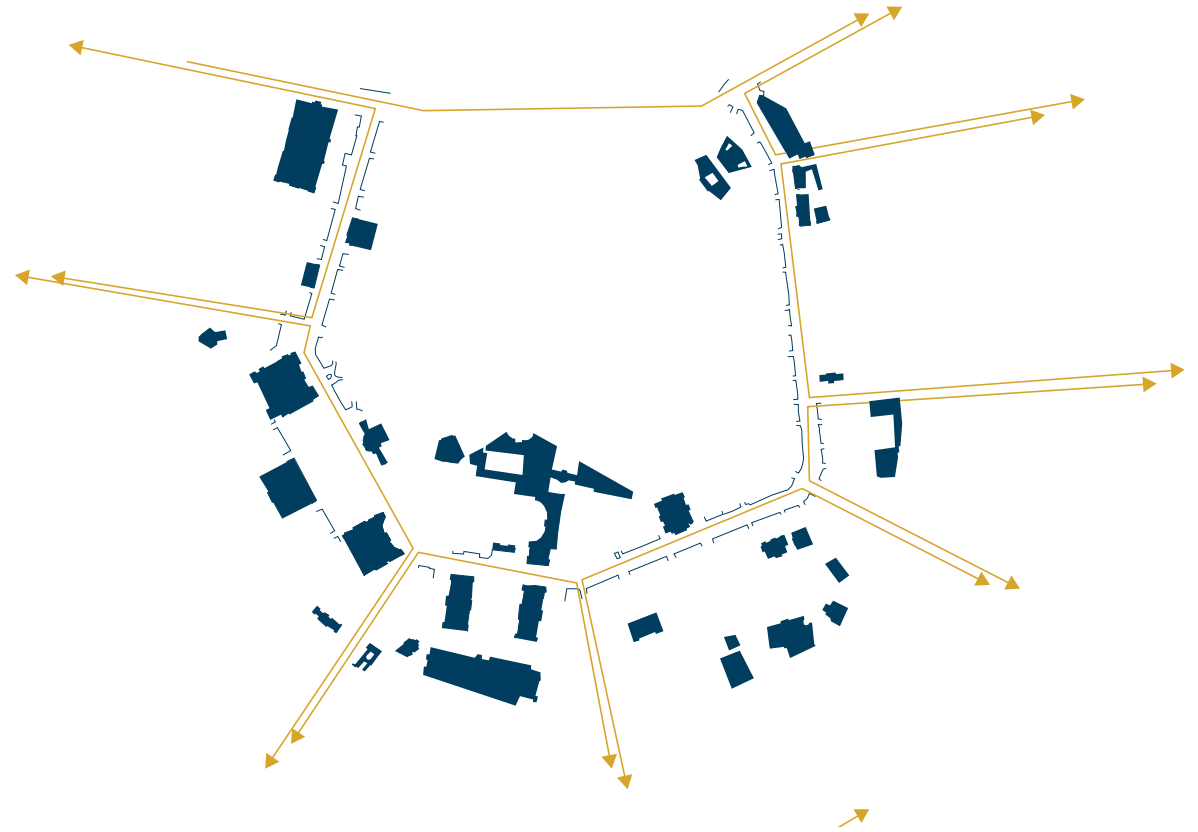
A LEGIBLE RINGSTRASSE



TRAFFIC RESTRICTIONS FOR THE MIDDLE SECTION



from a one way transport corridor ...

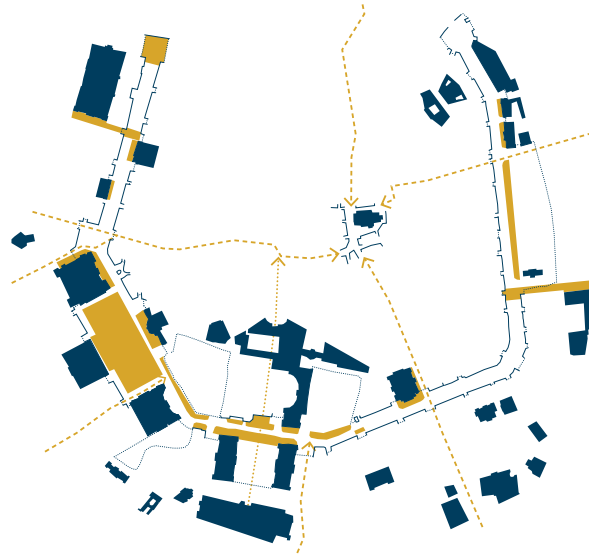


... to slow and less traffic with good opportunities for walking and bicycling

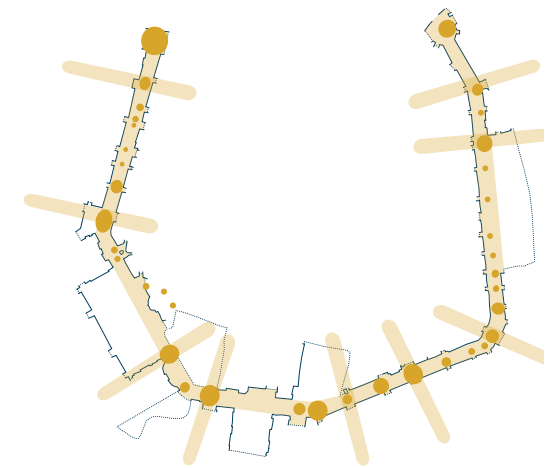
MAIN PRINCIPLES



A LEGIBLE RINGSTRASSE



ENGAGING THE AMENITIES

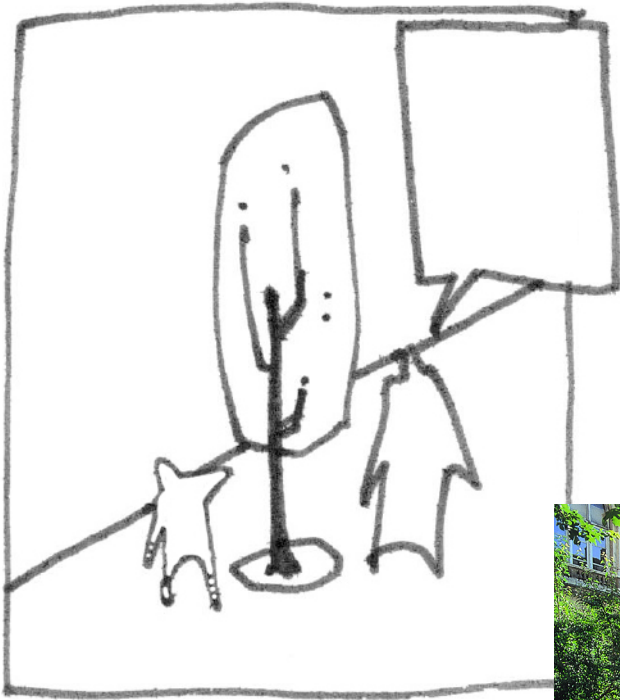


STRONG LOCAL ARRIVAL NODES

RINGSTRASSE, VIENNA 2015

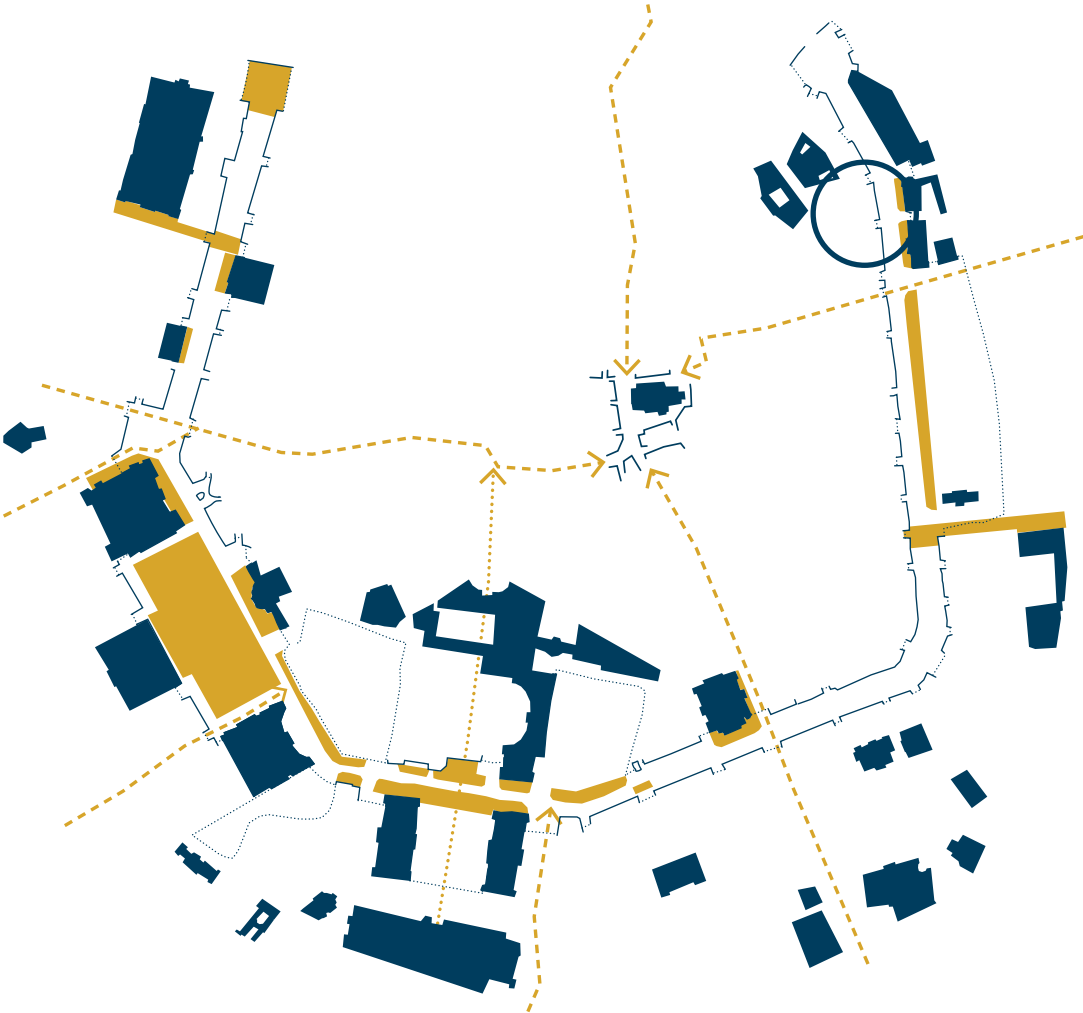
A LEGIBLE RINGSTRASSE

CHARACTERISTIC & CONTINUOUS ROWS OF STREET TREES ✓



RINGSTRASSE, VIENNA 2015

ENGAGE THE AMENITIES

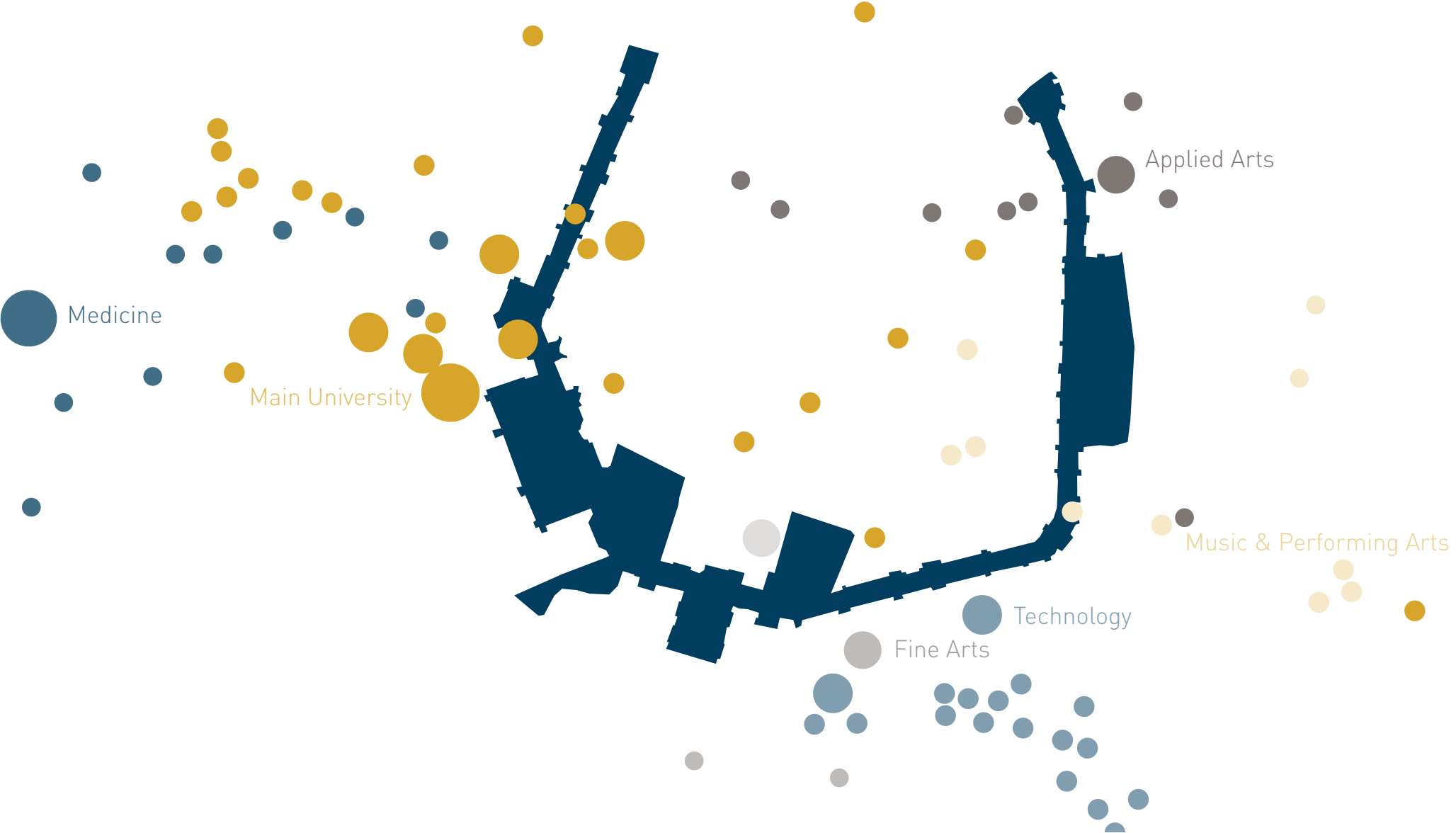


ENGAGE THE AMENITIES



RINGSTRASSE, VIENNA 2015

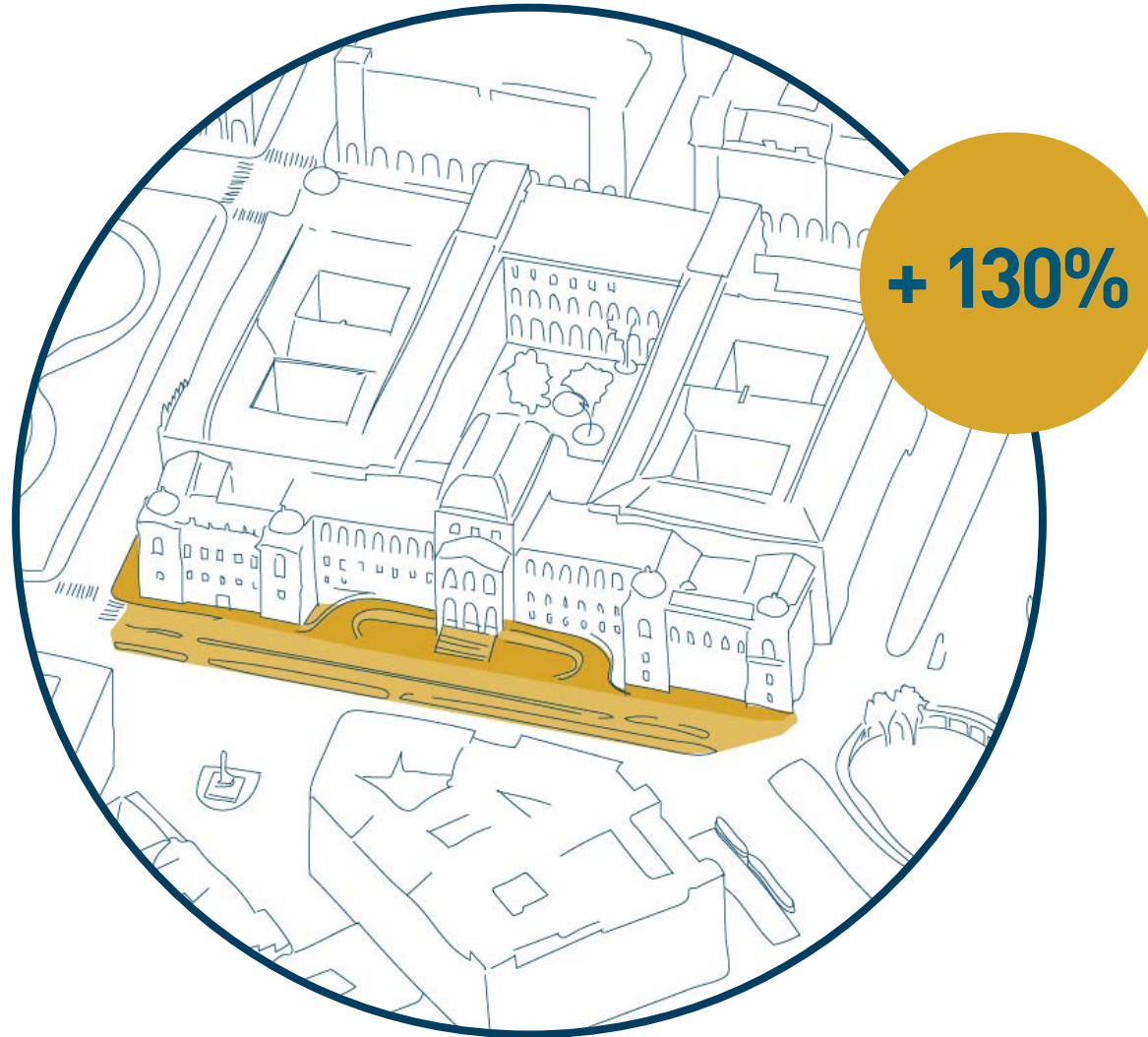
THE UNIVERSITY IS A NETWORK



RINGSTRASSE, VIENNA 2015

ENGAGE THE AMENITIES

UNIVERSITY



RINGSTRASSE, VIENNA 2015

ENGAGE THE AMENITIES



RINGSTRASSE, VIENNA 2015

ENGAGE THE AMENITIES



+ 70%
LANDTMANN
RIVERBED

RINGSTRASSE, VIENNA 2015

ENGAGE THE AMENITIES



RINGSTRASSE, VIENNA 2015

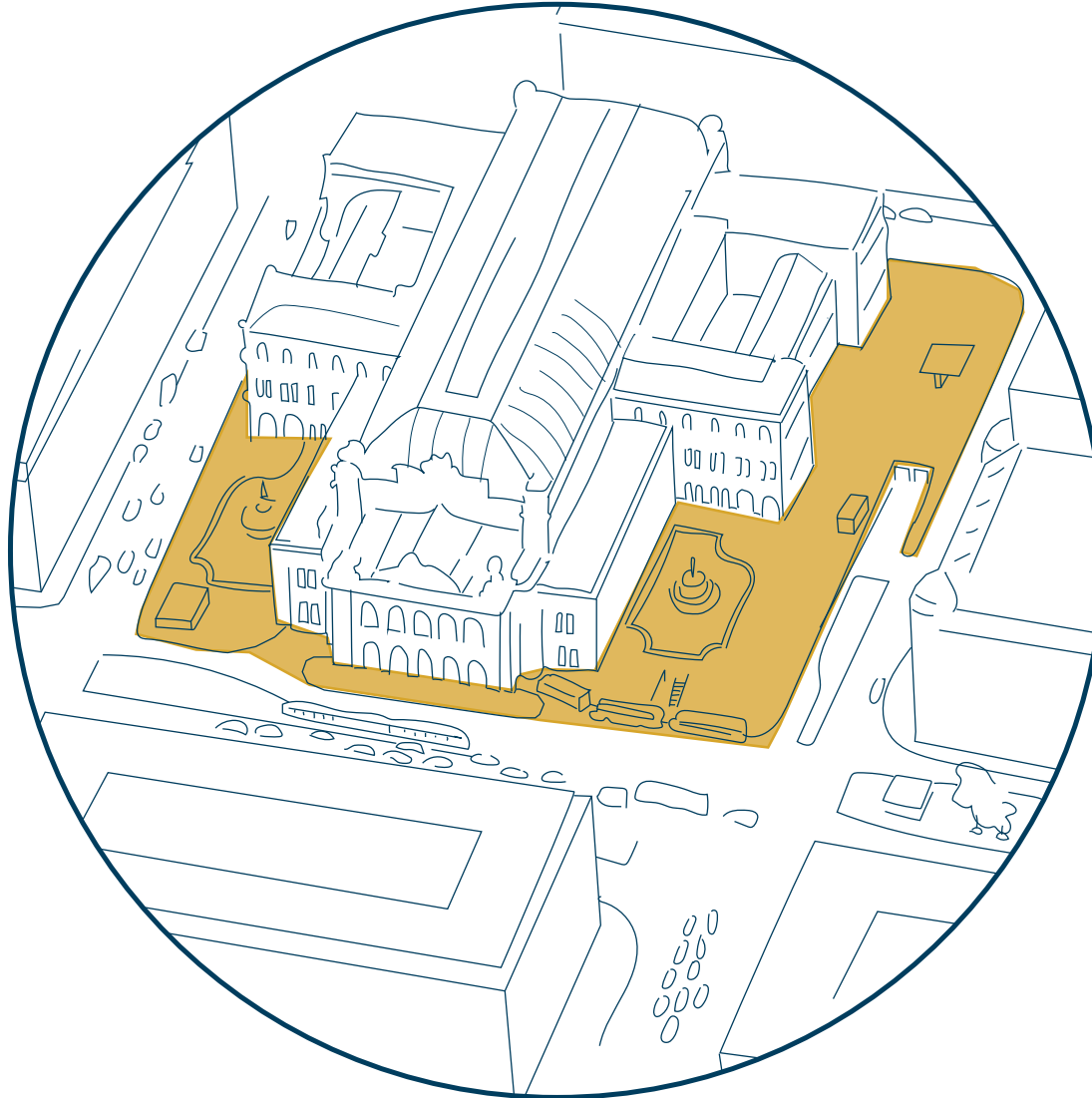
ENGAGE THE AMENITIES



RINGSTRASSE, VIENNA 2015

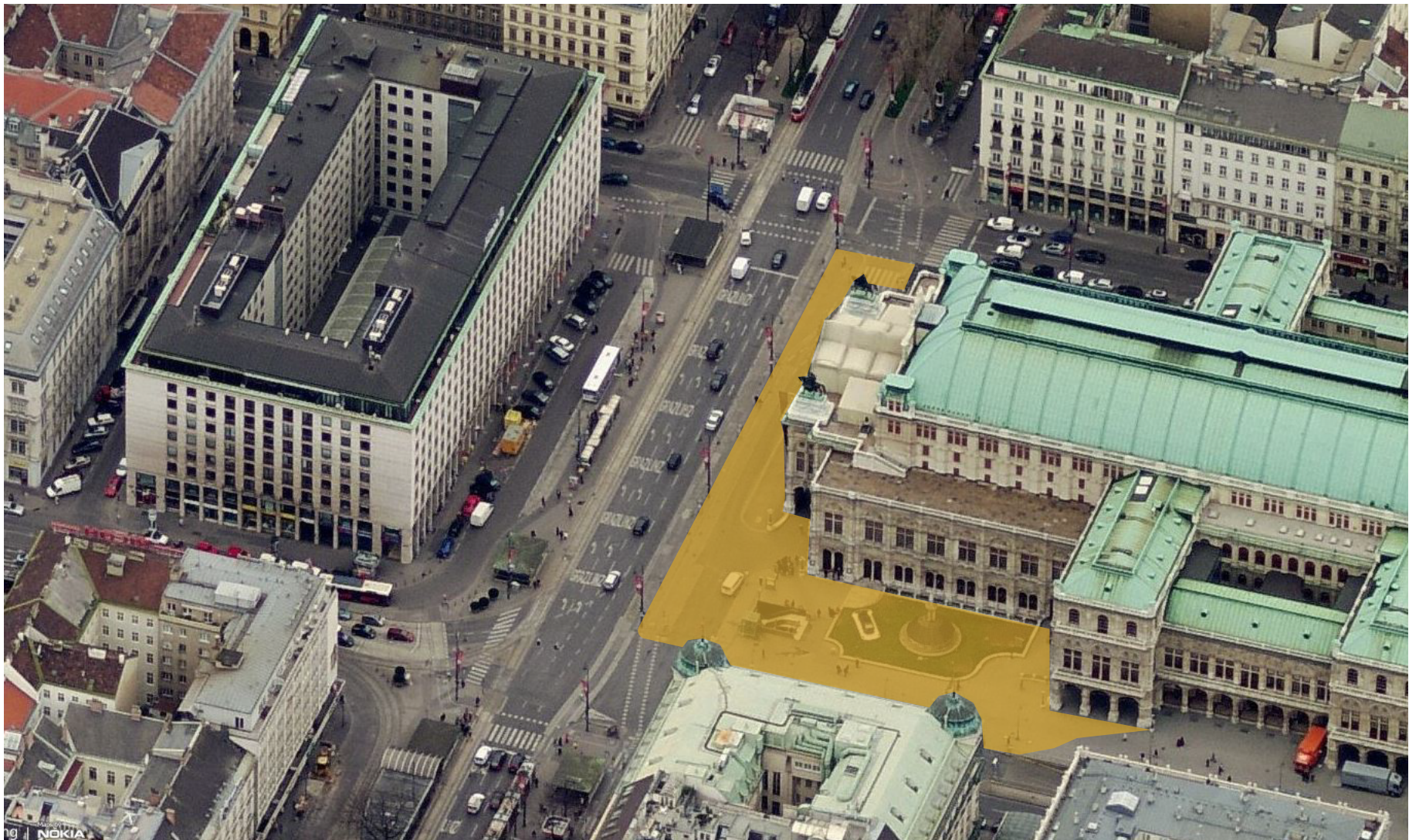
ENGAGE THE AMENITIES

OPERA

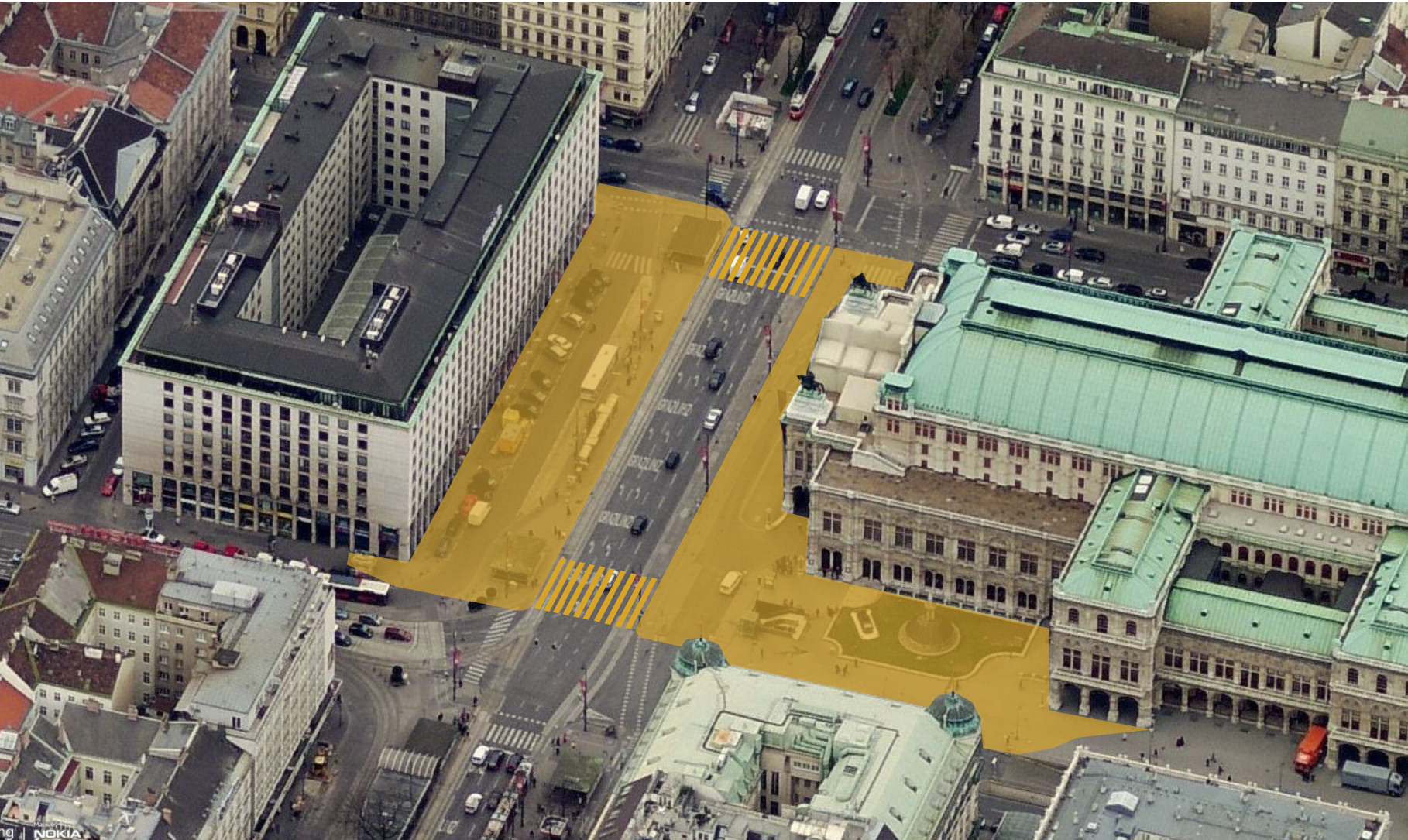


RINGSTRASSE, VIENNA 2015

OPERA - STEP 1

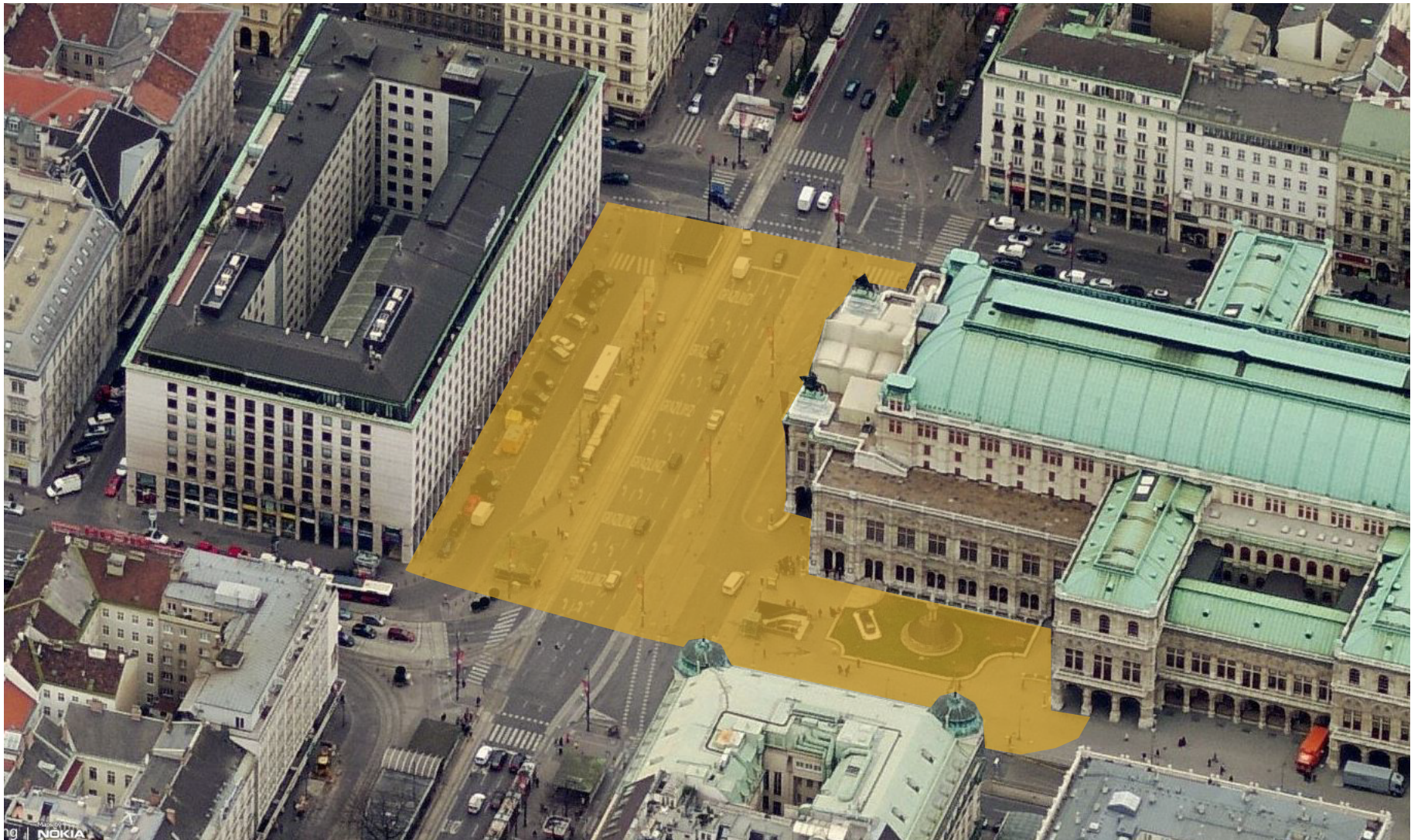


OPERA - STEP 3



RINGSTRASSE, VIENNA 2015

OPERA - STEP 3



RINGSTRASSE, VIENNA 2015

RINGSTRASSE - A WIENER SYMPHONY ...

